

# ITK-C0006

## 200KN Universal Testing Machine



### The project profile:

Domestic microcomputer control electronic universal testing machine started in the early 90 s, in order to improve the skill level of the enterprise products, the company has introduced foreign advanced technology, make the company's product technical level onto a new stage.

### Use areas

The products are widely used in metal, non-metallic materials, mechanical properties such as pressure and bending shear test. With a wide variety of affix, can also be used for material and components of mechanical properties test. In the specimen deformation is large, fast test of rope, belt, silk, rubber, plastics, and other areas of the material test, also have a very broad application prospects. Suitable for quality supervision, teaching, scientific research, aerospace, steel, metallurgy, automobile, construction materials, and other areas of the test.

### According to the standard:

Meet the national standard GB/T228.1-2010 "metallic materials tensile testing at", GB/T7314-2005 "metal compression test method" requirement, in line with the GB, ISO, ASTM, DIN, and other standard data processing. Can accord with the requirement of users and provide standard.

## Specification

Universal Testing Machine



LINE : @ITOKIN2000.COM  
TEL : 02-9744354-6  
EMAIL : SALESITOKIN@GMAIL.COM

# ITK-C0006

## 200KN Universal Testing Machine

### The key description

Host: this machine adopts double space gantry structure, stretching, space on the space under compression and bending. Beam lifting. Transmission part adopts circular arc tooth synchronous belt, screw pair drive, smooth transmission, low noise. Specially designed synchronous cog belt machine driven by gear system and precision ball screw pair of moving beam movement, achieve no clearance transmission.

2. Supported by:

Standard configuration: wedge together tensile, compression supported by a set of each.

3. The electrical control system:

(1) adopting ac servo systems and servo motor, the performance is stable, reliable, with over-current, over-voltage, overspeed, overload protection device, etc.

(2) with overload, over-current, over-voltage and displacement fluctuation limit and emergency stop protection function.

(3) the embedded controller, which guarantees the machine can realize the control of beam displacement and other parameters, which can realize constant displacement.

(4) at the end of the test, can be manually or automatically return to test the initial position at a high speed.

(5) to achieve the real physical zero, gain adjustment and test force measurement of automatic gear shifting, zero, calibration and inventory, and without any simulation adjustment link, highly integrated control circuit.

(6) electric control circuit with reference to international standards, in line with national testing machine electrical standards, strong anti-interference ability, can guarantee the stability of the controller, the experimental data accuracy.

(7) has a network interface, data transmission and storage, can be printed out and network transfer printing, can be connected to the enterprise internal LAN or Internet network.

## Specification



Max Test Force (kN)	200
Accuracy	1Level
Max force test range	2%-100%
Test force relative error value	<±1%
Load display resolution	Max force 1/300000
Distortion measuring range	2%-100%
Deformation relative error value	<±1%
deformation of resolution	maximum deformation 1/300000
Displacement relative error value	<±1%
displacement resolution(mm)	0.001
Speed range	0.005mm/min ~ 500mm/min
Tensile stroke (mm)	600
Compression space (mm)	600
Test width (mm)	500
Grips	Tensile, compression, bending, shear, peel, tear, etc
Overall dimension (mm)	1120*900*2500
Servo motor power (kW)	3
Weight (kg)	1800

## Universal Testing Machine



LINE : @ITKIN2000.COM  
TEL : 02-9744354-6  
EMAIL : SALESITKIN@GMAIL.COM



# ITK-C0006

200KN Universal Testing Machine

## System configuration

No	Item	The manufacturer and specifications	Qty	
1	Frame of host		1set	
2	deceleration system	synchronous belt	1set	
3	ballscrew		2set	
4	Load cell	200kN	1pcs	
7	Software and control system	----	1set	
8	Random tools, random files	Instruction manual, installation manual, etc	1set	
9	grips	1. Wedge tensile grips	flat jaw: 0-9、9-18、18-27 Round jaw: $\Phi$ 4-9、 $\Phi$ 9-16、 $\Phi$ 16-25	Can choose 2 pairs
		2. Compression fixtures	Compression diameter: $\phi$ 100mm	1set

## Control parameters:

1. Stress control speed range: 0.005 ~ 5% FS/s
2. Stress control precision, speed rate < 0.05% FS/s, for the value of plus or minus 2%, a rate of 0.05% or more the FS/s, for the value of plus or minus 0.5%.
3. The strain speed control range: 0.005 ~ 5% FS/s
4. The strain rate of control precision: rate < 0.05% FS/s, for the value of plus or minus 2%, a rate of 0.05% or more the FS/s, for the value of plus or minus 0.5%
5. The displacement control rate range: 0.005~ 300 mm/min
6. The displacement control rate of accuracy: for set value plus or minus 0.2%
7. Constant stress, constant strain, constant displacement control range: 0.5% ~ 100% FS
8. Constant stress, constant strain, constant displacement control accuracy: value 10% FS, or for the set value of plus or minus 0.5%, value < 10% FS, for the value of plus or minus 1%

Universal Testing Machine



LINE : @ITKIN2000.COM  
TEL : 02-9744354-6  
EMAIL : SALESITKIN@GMAIL.COM

# ITK-C0006

200KN Universal Testing Machine



Picture



Universal Testing Machine



LINE : @ITOKIN2000.COM  
TEL : 02-9744354-6  
EMAIL : SALESITOKIN@GMAIL.COM

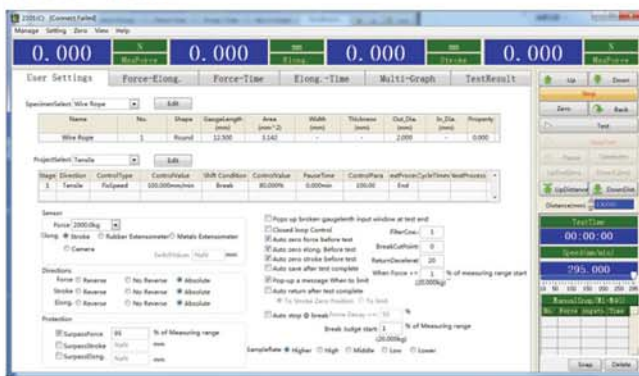


# ITK-C006

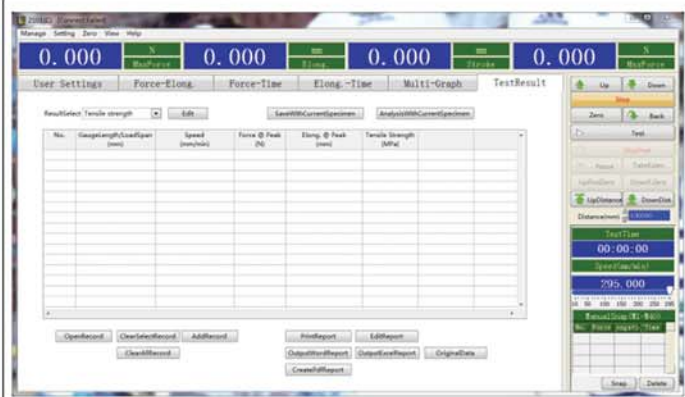
200KN Universal Testing Machine

Software

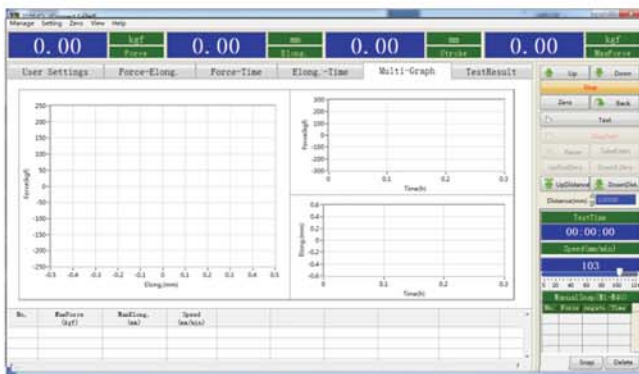
SOFTWARE – TM 2101



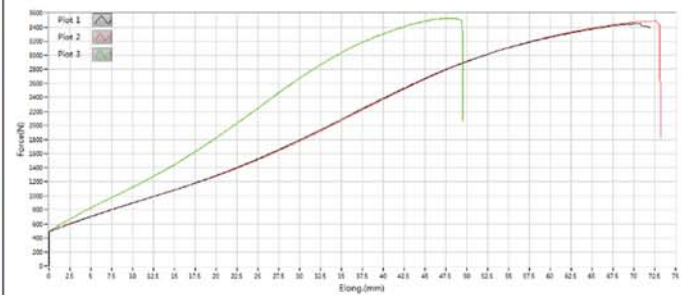
User setting page



Test result picture



Curves display picture



Test curve page

Universal Testing Machine



LINE : @ITKIN2000.COM  
TEL : 02-9744354-6  
EMAIL : SALESITKIN@GMAIL.COM